

Attachment A

Question 1 – Locations of existing monopine analysis

Original Question from 1st Hearing July 19, 2013

- 1) *If you could identify 7 or 8 locations where you have installed similar 50, 40, 60 foot high monopines in Northern California in similar communities. So please do not provide information for me to drive to downtown San Francisco. That is not going to help me, but if you can give me some smaller communities to go and take a look at installed similar facilities. I will randomly from that 7 or 8 try and pull out 3 or 4 sites and spend a Saturday or Sunday driving around and looking at and taking photos of to try and get a better feel for how the antennas will project or look in this site in downtown Boulder Creek.*

Issue #1 – The document provided by Aaron DeLao at the 2nd hearing August 23, 2013 only provides 6 locations, Wanda Williams asked for 7 or 8.

Issue #2 – Requested monopines installed in similar communities, but only 3 of the 6 are similar in population and size to Boulder Creek. See page 2

- * All 3 similar communities had multiple towers at the same location. This is one of our major concerns that this one tower will quickly become more.
- * None of these 3 locations were in downtown areas or major business sectors, unlike the Boulder Creek location.
- * Additionally, since Verizon was able to put the monopine in an area not accessible to the public or pedestrians in 2 of the 3 communities our size, why is Verizon not being required to do this in Boulder Creek as well?

Issue #3 – Correct locations of monopines not given, only 4 of the 6 addresses given were correct. 1 of the 6 was not viewable from address given. See page 2

Issue #4 – Not all installations were accessible to the public, as a pedestrian the closest you could get is 300' for La Honda (#4) and almost 1000' for Aromas (#3). See page 2

Issue #5 – Asked for installed similar 50, 40, 60 foot high monopines, only 3 of the 6 installations were the height requested (1 confirmed, 2 unknown). See below and page 2

Issue #6 – Only 2 of the 6 locations have pedestrian activity and public road access, like the proposed site, though neither are in their downtowns or in major business sectors.

#5 Cabrillo College in Aptos, which is similar in size and population to Boulder Creek. See page 2, photos page 10-11

The monopine is located at the back of the College along with 3 total cell towers, and is 59.5' tall.

#6 in Salinas, which has a population of 150,000+, which is 30,000 times larger than Boulder Creek. See page 2, photos page 12-13

The monopine is located at the entrance to Monterey County Jail, not a major pedestrian hub, and is 70' tall.

Issue #7 – The images provided by Aaron DeLao do not show the true visual impact of the monopines. Site #1 in Santa Cruz is a perfect example of manipulative photography tactics being used, please compare their images to our provided images.

Location and camouflage analysis

#1 – 1503 La Madrona Drive, Santa Cruz, CA 95060	has 1 tower & 1 pole, 3 carriers, monopine is 90.3'	See page 2, photos pages 3-5
#2 – FrontierLand Park, Pacifica, CA 94044	has 1 tower, monopine is unknown height	See page 2 & page 5
#3 – 55 Dunbarton Road, Aromas, CA 95004	has 3 towers & 1 pole, monopine is 30'	See page 2, photos page 6
#4 – 335 Sears Ranch Road, La Honda, CA 94020	has 2 towers, monopine is unknown height	See page 2, photos pages 7-9
#5 – Cabrillo College, 6500 Soquel Drive, Aptos, CA 95003	has 3 towers, monopine is 59.5'	See page 2, photos 10-11
#6 – Monterey County Jail, 1410 Natividad Road, Salinas, CA 93906	has 1 tower, monopine is 70'	See page 2, photos 12-13

* Unless otherwise noted all photos are taken with Canon Rebel T3i, with EFS 18-135mm lens, full resolution images available upon request.

Monopine Location Address Given	Monopine Location Correct Address	Population of City	Size of City	Pedestrian Activity Near Monopine	Private Access Road to Monopine
#1 155 Firehouse Lane Santa Cruz, CA 95060	#1 has 1 tower & 1 pole, 3 carriers, 90.3' monopine 1503 La Madrona Drive Santa Cruz, CA 95060	60,049	15.8 square miles	No	Yes
		* Monopine is on mountain side above Santa Cruz, next to Highway 17		* No sidewalks, almost no street parking * No sign of pedestrian traffic, overgrown vegetation	
#2 FrontierLand Park Pacifica, CA 94044	#2 has 1 tower, unknown height Address given correct Behind park bathrooms	37,234	12.7 square miles	No	No
		* Monopine is on hillside above town, it serves a valley of track housing below it		* No sidewalks, no hiking trails * Equipment area is next to park storage yard behind bathrooms * Monopine is up on hillside, view is blocked by hillside & vegetation * Monopine is around 300' from Restrooms * Monopine is around 400' from Parking * Monopine is around 600' from Play Equipment / Park area	
#3 55 Dunbarton Road Aromas, CA 95004	#3 has 3 towers & 1 pole 30' monopine Address unknown, could not verify, no signage on street	2,650	4.7 square miles	No, No public access	Yes
		* Monopine is on top of a hill which is higher than most of town		* No sidewalks, no street parking * No sign of pedestrian traffic, overgrown vegetation * Equipment size is unknown since we could not get closer than 1000'	
#4 450 Sears Ranch Road La Honda, CA 94020	# 4 has 2 towers, unknown height 335 Sears Ranch Road La Honda, CA 94020	928	4.3 square miles	No, No public access	Yes
		* Monopine is on a hillside above town		* No sidewalks, no street parking * Not viewable from address given * Not viewable from Sears Ranch Road while driving * Is viewable from other areas of La Honda	
#5 6500 Soquel Drive Aptos, CA 95003	#5 has 3 towers, 59.5' monopine Address given correct Back end of Cabrillo College	6,220	6.4 square miles	Yes	No
		* Monopine is on a hillside above the main campus		* Sidewalks, parking lot near by * Pedestrian traffic, major hub	
#6 1410 Natividad Road Salinas, CA 93906	#6 has 1 tower, 70' monopine Address given correct Entrance to Monterey County Jail	150,441	23.2 square miles	Yes	No
		* Salinas is relatively flat		* No sidewalks, next to parking lot * Not a major hub	
Proposed Location 13260 Big Basin Way Boulder Creek, CA 95006		4,923	7.5 square miles	Yes	No
				* Sidewalks near by, parking lots near by & street parking * Ample pedestrian traffic, major hub in town	

None of the locations given were in downtown areas, none of the locations given were in major business sectors.

#1 - 1503 La Madrona Drive, Santa Cruz, CA 95060



Monopine 9/6/2013



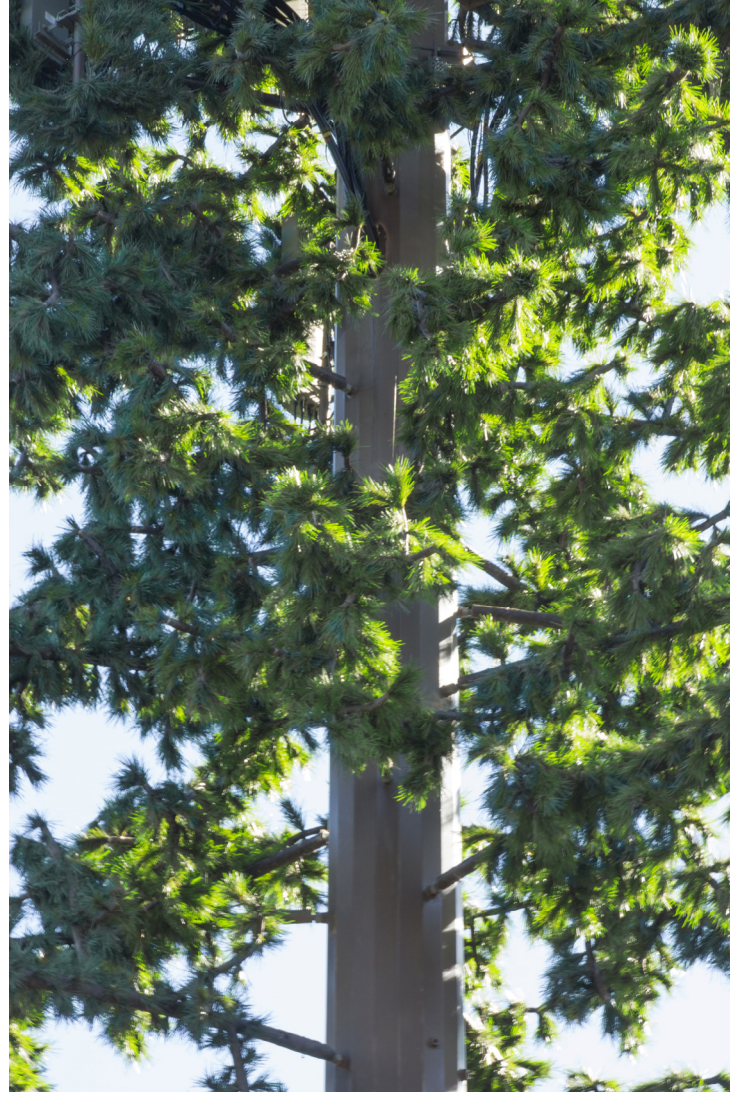
Monopine per Google street view, Image date May 2011

* Both of these images are of the same location. At some point the monopine was replaced with a newer model. The older model looks more like a tree and has better bark camouflage. If the monopine is approved will newer models be of the same or better camouflage standards?

#1 - 1503 La Madrona Drive, Santa Cruz, CA 95060



Trunk detail



Branch detail

- * No trunk camouflage
- * Pine needles don't match surrounding foliage causing it to stand out
- * This monopine camouflage doesn't pass pedestrian test
- * Monopine is 90.3' tall, height confirmed by Crown Castle (800) 788-7011, site # 877227
- * You can't get a sense of how the antennas will look on a 50' tree because this one is 40' taller

#1 - 1503 La Madrona Drive, Santa Cruz, CA 95060



#2 - FrontierLand Park, Pacifica, CA 94044

- * Photos were not obtained because its location more than anything else is what makes it unnoticeable.
- * The equipment is behind a fence that is the same type as the storage yard, making it look like it is part of the storage yard.
- * The monopine is away from view by several hundred feet, blocked by a hillside, and vegetation.
- * If Verizon could find a location like this for the proposed monopine in Boulder Creek, that would be wonderful.
- * Monopine is unknown height. Verizon would not confirm height, said it was proprietary information (800) 922-0204. Our request to Aaron DeLao went unanswered. The San Mateo County planning department was not able to get us the info either.

#3 – 55 Dunbarton Road, Aromas, CA 95004



- * All three of these monopines are on private property, and accessible by private road only, there was no signage on Dunbarton Road
- * Equipment size is unknown since we could not get closer than 1000'
- * Viewable from the 101 Freeway, Dunbarton Road, and San Juan Road
- * Monopine is 30' tall, height is per AntennaSearch.com, Verizon would not confirm height, said it was proprietary information (800) 922-0204. Our request to Aaron DeLao went unanswered.



Attachment A

Locations of existing monopine analysis

#4 - 335 Sears Ranch Road, La Honda, CA 94020



* The tower on the left in the second image was installed after the Verizon tower.

Attachment A

Locations of existing monopine analysis

#4 - 335 Sears Ranch Road, La Honda, CA 94020



Trunk detail



Branch detail



Branch detail

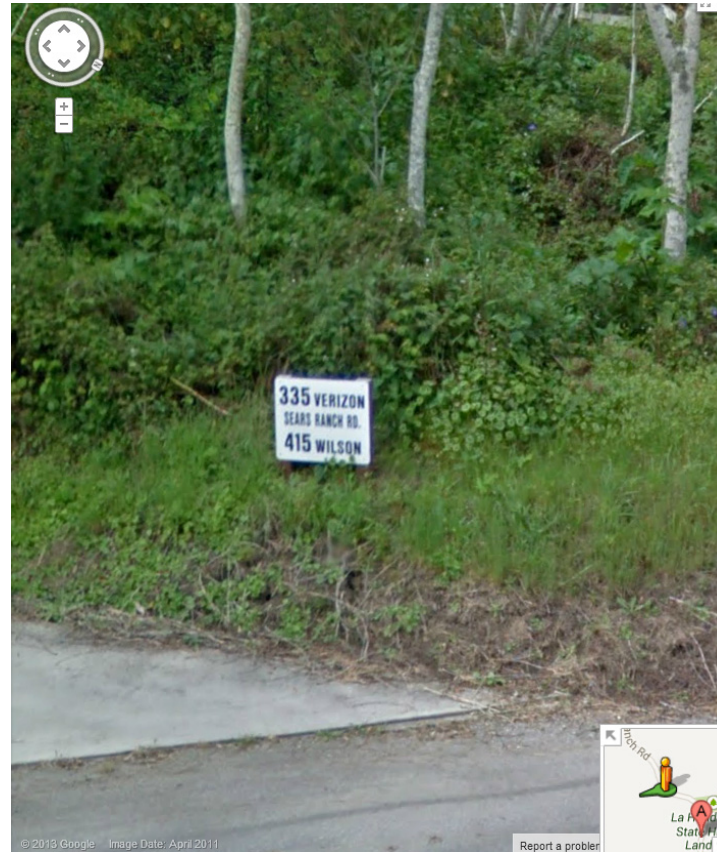
- * Trunk camouflage stops where branches start
- * Antenna area has a very industrial look to it
- * Pine needles don't match surrounding foliage causing it to stand out
- * Equipment was loud
- * This monopine camouflage doesn't pass pedestrian test
- * Monopine is unknown height. Verizon would not confirm height, said it was proprietary information (800) 922-0204. Our request to Aaron DeLao went unanswered. The San Mateo County planning department was not able to get us the info either.

#4 - 335 Sears Ranch Road, La Honda, CA 94020



* There were no private property signs or do not enter signs at this location and the gate was open. Upon leaving though we were informed by Mr. Wilson that this is private property and if you are not a Verizon employee you are not allowed on the property. We told him we were there to take pictures of the Verizon tower and was given this location by Aaron DeLao, we then apologized profusely.

* Right image per Google street view.



#5 - 6500 Soquel Drive, Aptos, CA 95003, back end of Cabrillo College



#5 - 6500 Soquel Drive, Aptos, CA 95003, back end of Cabrillo College



Trunk detail



Branch detail



- * Trunk camouflage stops where branches start
- * Antenna area has a very industrial look to it
- * Pine needles don't match surrounding foliage causing it to stand out, which is the least of this monopine's camouflage problems
- * Equipment was not quiet, it ran the whole time we were there. We visited this location a number of times.
- * Monopine is easily identifiable without even trying from main road and Cabrillo College entrance which is over 1000' away
- * This monopine camouflage doesn't pass pedestrian test or driving test
- * Monopine is 59.5' tall, height confirmed by Crown Castle (800) 788-7011, site # 877228

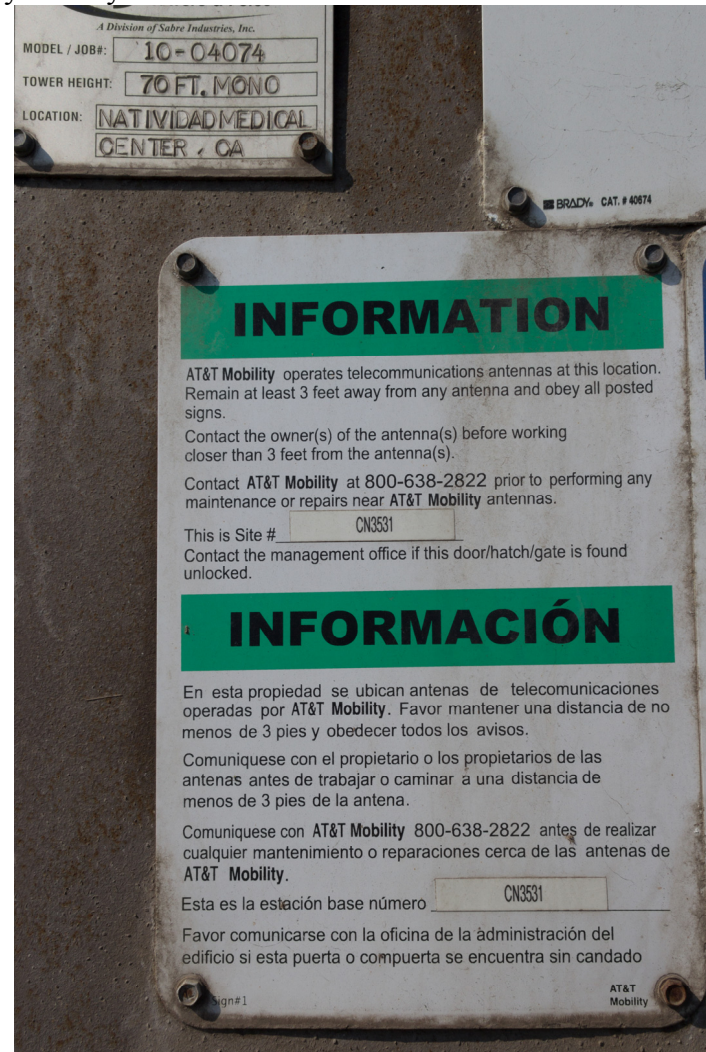
#6 – 1410 Natividad Road, Salinas, CA 93906, entrance to Monterey County Jail



#6 – 1410 Natividad Road, Salinas, CA 93906, entrance to Monterey County Jail



Trunk Detail



- * Trunk camouflage looks like plaster not bark.
- * It only has one set of antennas, the proposed tower can and probably will have 2 sets, maybe more.
- * Monopine is 70' tall, height confirmed by signage at site.
- * You can't get a sense of how the antennas will look on a 50' tree because this one is 20' taller.
- * This monopine camouflage doesn't pass pedestrian test or driving test.